

NOTE: PLEASE GIVE PART NO. DESCRIPTION SERIAL NO. AND DRAWING NO. 5230-5420-3 WHEN ORDERING PARTS FOR MAINTANCE AND LUBE INSTRUCTIONS REFER TO INSTRUCTION 1001-2 FOR MITER GEAR REPLACEMENT PROCEDURE REFER TO INSTRUCTION 1066-1

THIS DRAWING IS THE CONFIDENTIAL PROPERTY OF MODERN EQUIPMENT COMPANY, AND IS LOANED IN CONFIDENCE UNDER AGREEMENT THAT THE INFORMATION SHOWN IS TO BE CONSIDERED PROPRIETARY, AND THAT THE DRAWING IS NOT TO BE REPRODUCED AND WILL BE RETURNED UPON REQUEST. THE DRAWING IS ALSO NOT TO BE COPIED, OR OTHERWISE DISPOSED OF WITHOUT OUR WRITTEN CONSENT AND IS NOT TO BE USED IN WHOLE OR IN PART WITHOUT OUR CONSENT FOR THE MAKING OF OTHER DRAWINGS, PRINTS OR DEVICES THEREFROM. THESE CONDITIONS ARE AGREED TO BY THE ACCEPTANCE OF THIS DRAWING OR PRINT.

MATERIAL LIST

NO.	RECD	PART NUMBER	DESCRIPTION	WT.
1		2200-1003-2	WDRM & SHAFT ASSEMBLY	.
2		2200-1010-2	COVER & BUSHING ASSEMBLY	.
3		2200-1020-2	HOUSING & BUSHING ASSEMBLY	.
4		2200-1050-2	HANDWHEEL 24"	.
5		0171-0045-2-004	KEY	.
6		0121-0020-2	GEAR WDRM WHEEL	.
7		0077-0012-2	SPACER	.
8		0019-0047-5	BEARING ROLLER	.
9		0018-0015-2	COVER GEARING	.
10		0121-0100-2	GEAR MITER	.
11		0011-0216-2	SHAFT HANDWHEEL	.
12		0028-0145-3	BRACKET	.
13		0104-0004-2	PLUG TAKE-UP BEARING	.
14		0018-0012-2	COVER BEARING ADJUSTMENT	.
15		.	.	.
16		.	.	.
17		0030-0007-2	SET COLLAR	.
18		0104-0003-2	PLUG TAKE UP BEARING	.
19		2830-1021-1	SPACER AND SHIM SET ASSEMBLY	.
20		0167-0012-3	HOUSING MITER GEAR	.
21		0018-0008-2	COVER PLATE	.
22		0019-0048-5	BEARING ROLLER	.
23		2830-1009-1	SPACER & SHIM SET ASSEMBLY	.
24		.	.	.
25		9903-1141	KEY WOODRUFF 3/8 X 1 1/4	.
26		9903-1193	Hx.HD.CAP.SCR. 1/2-13 NC-x 1 3/4	.
27		9903-1152	Hx.HD.CAP.SCR. 1/4 x 3/4	.
28		9903-1162	Hx.HD.CAP.SCR. 5/16 x 7/8	.
29		9903-1164	Hx.HD.CAP.SCR. 5/16 x 1 1/4	.
30		9903-1191	Hx.HD.CAP.SCR. 1/2 x 1 1/4	.
31		9903-1192	Hx.HD.CAP.SCR. 1/2 x 1 1/2	.
32		9903-1476	LOCK WASHER 1/2"Ø	.
33		9903-1473	LOCK WASHER 1/4"Ø	.
34		9903-1474	LOCK WASHER 5/16"Ø	.
35		0148-0062-2	NAMEPLATE GEAR	.
36		.	NOTE: PUNCH 3/16" HIGH LETTERS	.
37		.	MODEL - 5230-5420-3	.
38		.	SERIAL #	.
39		.	RATIO - 40:1	.
40		.	MAX. HP. -	.
41		.	MAX. OUTPUT TORQUE - 3,585	.
42		9903-2128	SCR. DR. #6 X 0'-0 1/4"	.
43		.	.	.
44		.	.	.
45		.	.	.

NO.	REVISIONS
19	
18	
17	
16	
15	
14	
13	
12	
11	
10	

Modern Equipment Company
planning . . . engineering . . . manufacturing . . . erection
 BOX 266, PORT WASHINGTON, WISCONSIN 53074
 TELEPHONE: 414-284-9431 FAX: 414-284-9433
 AN ALCO INDUSTRIES INC. CO.

FOR #1 24" DIA HND. WHL. & BRACKET #1 LOCK
 LOCATION 40:1 RATIO, 3,585 IN-LBS MAX. TORQUE
 DESCRIPTION "C" GEAR ASMY. #1 24"Ø HND. WHL. & BRACKET

DRAWN BY DATE | CHECKED BY DATE
 GDA 01/23/98 WAM 01/26/98

SCALE 1/4" = 0'-1"

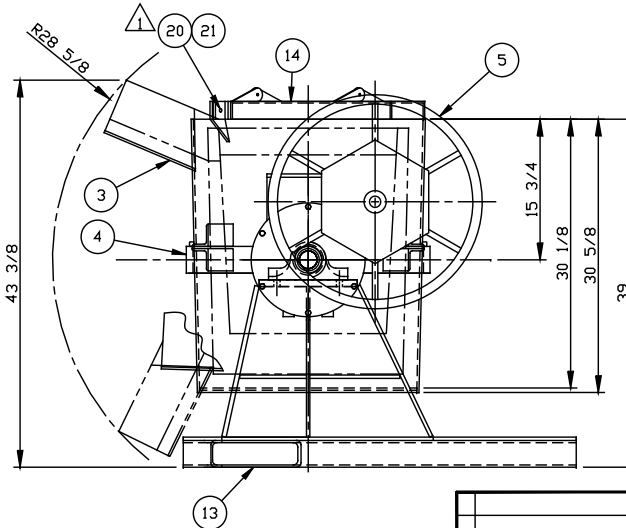
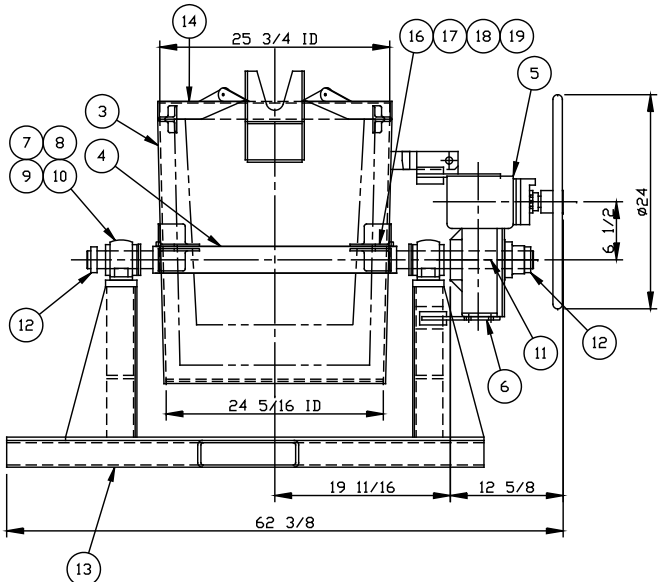
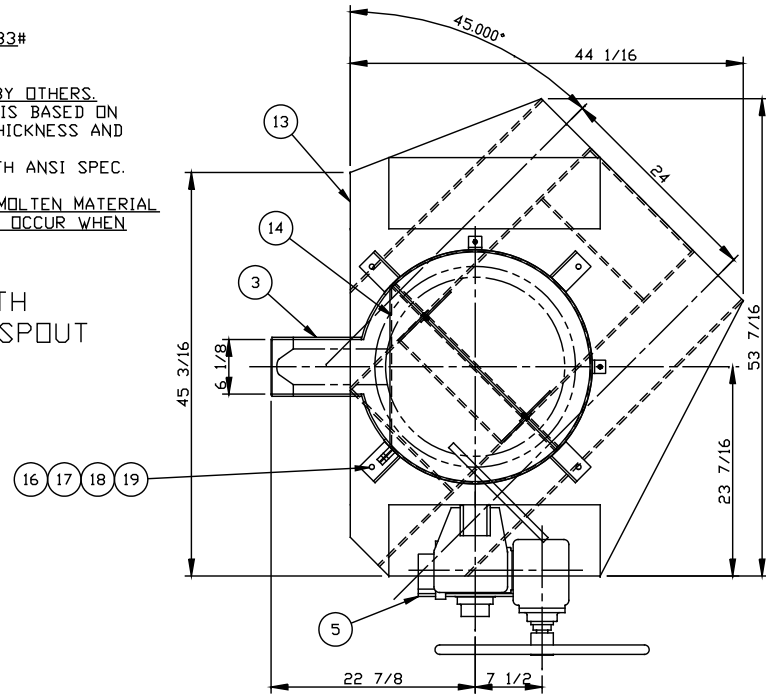
FILE NO. PROJ. 5230 #54203000	TOLERANCES: - UNLESS OTHERWISE SPECIFIED -
FRAC. .XX .XXX .XXXX .XX"	CORNER RADII .06" MAX.
± 1/32" ± .05 ± .005 ± .0005 ±	BREAK ALL CORNERS AND REMOVE ALL BURRS

MATERIAL LIST

NO.	REQD	PART NUMBER	DESCRIPTION	WT.
1	.	1194-2600-3-002	26" TAPERED LADLE ON STAND	.
2
3	1	0129-0322-3	SHELL	.
4	1	0190-0478-2	SHANK RING	.
5	1	5230-5420-3	"C" GEAR ASSEMBLY	.
6	1	0028-1057-2	TORQUE BRACKET	.
7	2	0019-0707-5	BEARING PILLOW BLOCK	.
8	4	9903-1211	SCR CAP 5/8-11NC X 3 GR5	.
9	4	9903-1477	LOCK WASHER 5/8	.
10	4	9903-1009	NUT HEX FULL 5/8-11NC GR5	.
11	1	0171-0046-2-047	KEY	.
12	2	0030-0021-5	SET COLLAR	.
13	1	0133-0161-4	STAND	.
14	1	2180-2239-2	COVER ASSEMBLY	.
15	15	0156-0028-5	GREASE	.
16	4	9903-1193	SCR CAP 1/2-13NC X 1-3/4	.
17	4	9903-1007	NUT HEX 1/2-13NC	.
18	4	9903-1447	FLAT WASHER 1/2	.
19	4	9903-1476	LOCK WASHER 1/2	.
20	1	0113-0018-5	#4 CHAIN X 12"	.
21	1	0005-0020-5	PIN, SAFETY SNAP	.
22

LADLE CAPACITY = 500# ALUMINUM BASED ON .083# PER CUBIC INCH DENSITY, 3-1/8" SIDE LINING, 6-1/8" BOTTOM LINING AND 4" FREE TOP SPACE. ALL REFRACTORY IS SUPPLIED AND INSTALLED BY OTHERS.
 NOTE: THE RATED CAPACITY OF THIS LADLE IS BASED ON THE VOLUME OF THE LADLE, LINING THICKNESS AND INDICATED NOMINAL FREE TOP SPACE.
 CAUTION: LADLE FILL LEVEL MUST COMPLY WITH ANSI SPEC. Z 241.2 SECTION 6.3.5.1. *LADLES SHALL NOT BE FILLED WITH MOLTEN MATERIAL ABOVE A LEVEL WHERE SPILLAGE MAY OCCUR WHEN NORMALLY TRANSPORTED*.

NOTE LADLE TO BE USED WITH FOSECO INSURAL LINER AND SPOUT



ESTIMATED WEIGHTS	
LADLE ASS'Y	- 475#
REFRACTORY @ VARIES/CU.IN.	- 375#
STAND ASSEMBLY	- 575#
EMPTY WEIGHT	- 1,425#
ALUMINUM @ .083#/CU.IN.	- 500#
WEIGHT @ RATED CAPACITY	- 1,925#
BRIMFULL METAL	- 115#
GROSS WEIGHT	- 2,040#

MATERIAL SPECIFICATION NOTES

- ALL STEEL SHALL CONFORM TO ASTM A36 STANDARDS FOR MINIMUM MECHANICAL PROPERTIES, AND SHALL BE FABRICATED IN ACCORDANCE WITH THE RECOMMENDED PRACTICE OF THE AMERICAN INSTITUTE OF STEEL CONSTRUCTION.
- ALL STEEL SHALL CONFORM TO ANSI/ASTM A66-78 (OR LATEST EDITION) STANDARDS FOR DIMENSIONAL TOLERANCE.
- ALL BOLTS SHALL CONFORM TO ASTM A328 STANDARDS FOR MINIMUM MECHANICAL PROPERTIES UNLESS OTHERWISE SPECIFIED.
- WELDING PROCEDURES TO CONFORM TO AISC FOR DESIGN, FABRICATION AND ERECTION OF STRUCTURAL STEEL FOR BUILDINGS.
- ALSO STANDARD WELDING SYMBOLS WILL BE USED FOR THE DESIGNATION OF WELDS.
- ALL SHOP AND FIELD WELDED CONNECTIONS SHALL BE MADE WITH E70 SERIES ELECTRODES UNLESS OTHERWISE SPECIFIED.

THIS DRAWING IS THE CONFIDENTIAL PROPERTY OF MODERN EQUIPMENT COMPANY, AND IS LOANED IN CONFIDENCE UNDER AGREEMENT THAT THE INFORMATION SHOWN IS TO BE CONSIDERED PROPRIETARY, AND THAT THE DRAWING IS NOT TO BE REPRODUCED AND WILL BE RETURNED UPON REQUEST. THE DRAWING IS ALSO NOT TO BE COPIED, OR OTHERWISE DISPOSED OF WITHOUT OUR WRITTEN CONSENT AND IS NOT TO BE USED IN WHOLE OR IN PART WITHOUT OUR CONSENT FOR THE MAKING OF OTHER DRAWINGS, PRINTS OR DEVICES THEREFROM. THESE CONDITIONS ARE AGREED TO BY THE ACCEPTANCE OF THIS DRAWING OR PRINT.

DIMENSIONAL TOLERANCES - UNLESS OTHERWISE SPECIFIED -		
SIZE	MACHINED	FRACTIONAL
UNDER 12"	010	± 1/32"
12" TO 24"	020	± 1/16"
24" TO 48"	032	± 3/32"
48" TO 72"	AS SPECIFIED	± 1/8"
72" TO 240"	AS SPECIFIED	± 1/4"
OVER 240"	AS SPECIFIED	± 3/8"

ALL MACHINED SURFACES 1/8" CHAMFER AND WELD PREP'S ±2 1/2" CORNER RADII .06" MAX. BREAK ALL CORNERS AND REMOVE ALL BURRS

REVISIONS	

FILE NO. P:\ACADV\1194\26003002.dwg
 PLOT DATE 10-5-15
 REFERENCES: 6505-8259-3
 1194-2600-3-001

Modern Equipment Company

planning . . . engineering . . . manufacturing . . . erection
 369 W WESTERN AVE, PORT WASHINGTON, WISCONSIN 53074
 TELEPHONE: 262-284-9431 FAX: 262-284-9433
www.ModernEQ.com / www.ThinkModernEquipment.com

FOR CAST PRODUCTS, INC.		DATE	SHEET NO.
LOCATION NORRIDGE, IL	DATE CHECKED BY		
DESCRIPTION 25-3/4" TAPERED LADLE ON STAND	APK	10-5-15	
DWG. NO. 1194-2600-3-002	SCALE.		
	CONTRACT 70744		